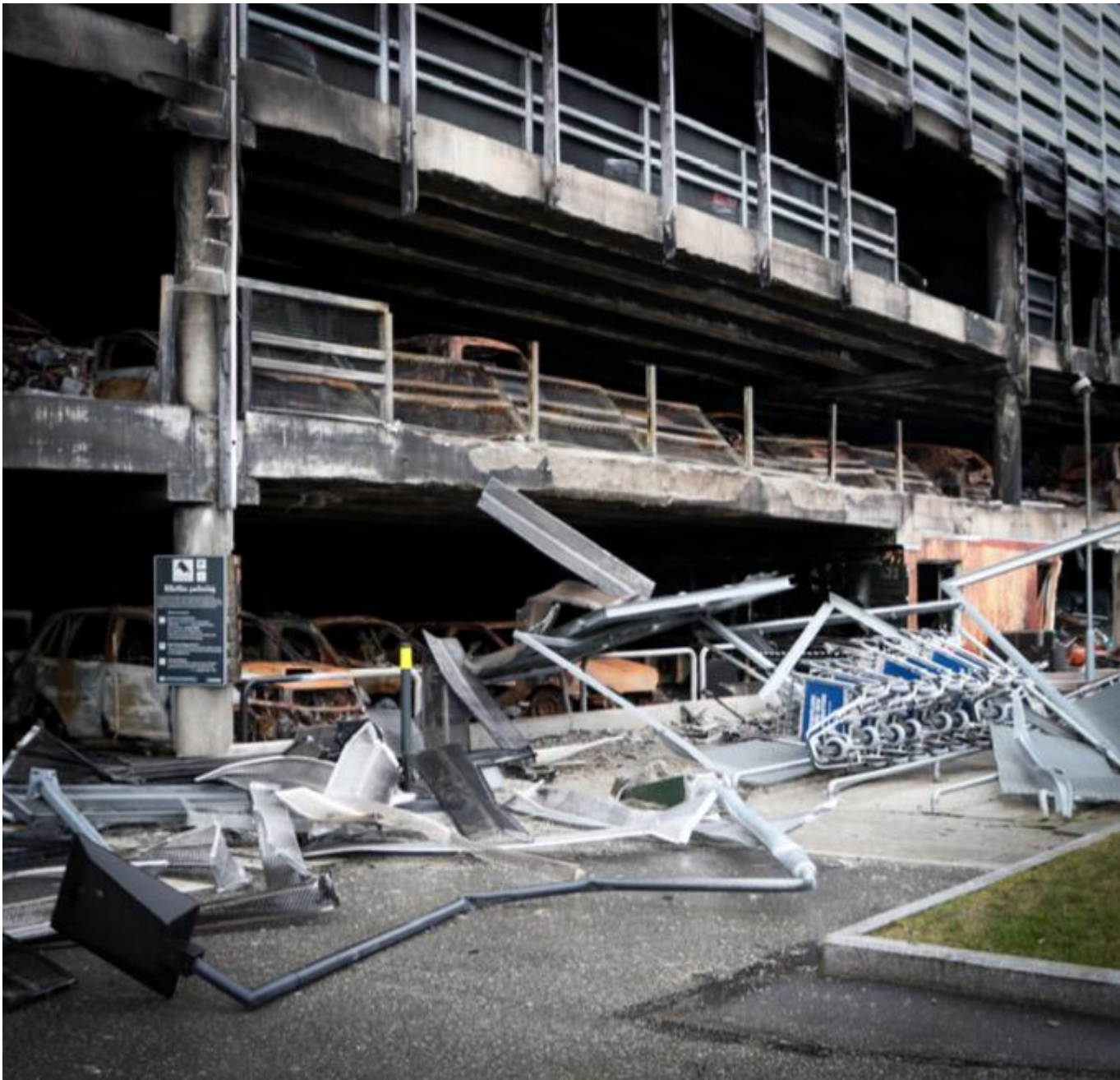


The fire at Stavanger Airport

January 7th 2020.



Parking house for 3000 cars

When the fire started it was 1600
cars in the building.

18 500 m² – 5 floors.

Building regulations

The building must resist fire for 15 minutes.

No demand for automatic fire alarm.

No demand for extinguishing system.

No demand for fire walls.

Risk analyze

Risk analyses had been done and the building was allowed to resist fire for 10 minutes.

Stavanger Airport, Sola

The Airport is cat.7/9 and is Norway's oldest airport. From 1937.

ARFF Service 3 Panthers 6 x 6.



Rogaland Fire & Rescue IKS

The firebrigade consists of: The cities
Stavanger and Sandnes +
Municipality Sola (Airport) + 6 other
municipalities.

Rogaland Fire & Rescue

440 employees.

15 fire stations.

(3 manned 24/7 + the rest part time)

Start of fire

January 7th 2020 15:25

Alarm central Rogaland

Alarm was received 18:33
8 min. after the fire started.
Fire in a car.

Alarm at the airport

ARFF received fire alarm earlier than
Alarm central Rogaland.

ARFF Respond to the fire

They sent at once 1 fire vehicle and 1
fire fighter.

Some minutes later one more FF.

Pri 1 - Airplanes

ARFF still had fire vehicles in fire station for responding to airplane fires.

ARFF Stavanger Airport

Building fires.

ARFF respond, but do not go into the building. They do not have Breathing Apparatus personell.

ARFF respond to buildings and
then alarm municipal Fire
Brigade



The fire started in an Opel Zafira

Parked on ground floor

IT WAS NOT AN ELECTRIC CAR.

ARFF tried to extinguish the fire

With fire extinguisher/fire blanket
Monitor could not be used because
of danger to persons in the parking
house.

Rogaland Fire & Rescue

Arrived the airport 15:53

The fire concept for the building
assumed they would arrive after 10
min. (20 min.)

The airport is closed 16:15

ARFF then respond to the fire scene
with all the airport fire vehicles.

The monitors is now used.

Rogaland Fire & Rescue

Fire fighters with BA respond to the fire when they arrived.

The fire spread very fast and they have to return.

Fire spread very fast.

Because of very heavy wind. 19
m/sec.

And running fuel from the cars. Very
fast fire in many cars.

Building collapsed.

The parking house collapsed 30 min.
after the BA fire fighters had to
return.

The heavy wind was a problem.

But it was also good for blowing out
the fire gases.

Evacuation.

The main problem with the heavy wind was after some time that it sent the smoke towards the hotel.

This had to be evacuated.

The fire under control 01:00

The Airport opens and the first flight
from the airport is 06:00

Environment

Future problems?

Foam used in the fire

3 900 l. Rehealing Foam – Solberg.

760 l. Moussol FF – Sthamer.

Mix Foam 3% - Water 97%

More than 150 000 l water/foam
into the ground around the airport.

The foam was fluor free.

But all FF Foam has a small part of
fluor components.

Thank you for listening.

